



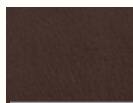
Perfect Chair®
pc420
classic manual plus

How Do You Improve on **PERFECTION?**

The human body is naturally balanced, graceful and beautiful. That is why we made escaping gravity's adverse effects as easy as leaning back. The Perfect Chair PC-420 Classic Manual Plus features a fluid manual recline that uses the body's own weight to gently ease into all recline angles. Our iconic Perfect Chair architecture features extended armrests, elongated head pillow and ergonomic lumbar support. Our zero-gravity ergonomics are still the best in the industry, and endorsed by physicians as the healthiest way to sit. Stylish design cues, premium upholstery, and comfort make it perfect for any décor. Welcome to the perfection of perfect.

PAD SET

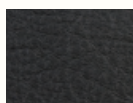
Premium Leather



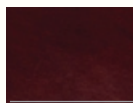
Espresso Premium Leather
PC-PAD-900-011



Cognac Premium Leather
PC-PAD-900-012



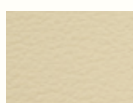
Black Premium Leather
PC-PAD-900-013



Burgundy Premium Leather
PC-PAD-900-014

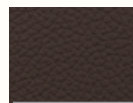


Sycamore Premium Leather
PC-PAD-900-015

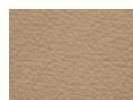


Ivory Premium Leather
PC-PAD-900-016

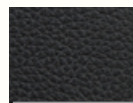
Top-Grain Leather



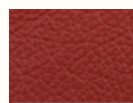
Espresso Leather
PC-PAD-900-017



Sand Leather
PC-PAD-900-018

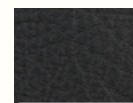


Black Leather
PC-PAD-900-019



Red Leather
PC-PAD-900-020

SōfHyde



Black SōfHyde
PC-PAD-900-021

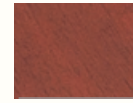
WOOD BASE FINISH



Walnut
PC-420-100-001



Dark Walnut
PC-420-100-002



Chestnut
PC-420-100-003



Perfect Chair®
pc420
classic manual plus

INFINITE COMFORT
POSITIONS

1

FULL-SUPPORT HEAD PILLOW

The comfort pillow cradles the head and neck while providing ergonomic support.



2

EXTENDED ARMRESTS

The wide and long armrests give constant support even as the chair reclines into zero-gravity.

3

RECLINE LEVER

The smooth recline motion eases back the Perfect Chair to position your body in a state of virtual weightlessness.



4

ADJUSTABLE LUMBAR SUPPORT

The adjustable lumbar system is equipped with a release valve, allowing you to customize your seating comfort.

5

CUSTOMIZE YOUR CHAIR

Choose from premium and top-grain leathers, and solid wood-based finishes. Additional upgrades of Memory Foam PLUS and Jade Heat offer enhanced comfort and health benefits.

SPECIFICATIONS:

Chair Reclined Dimensions:	63" L x 31" W x 26" H
Chair Upright Dimensions:	43" L x 31" W x 51" H
Seat Width:	22"
Recline Angle:	125 – 175 degrees
Product Weight:	71 lbs.
Maximum Weight Load:	400 lbs.

NOTE (for all models): Footrest height when reclined is 31"; distance to wall is 9".

5-YEAR LIMITED WARRANTY

- 5-Years Structural
- 3-Year In-Home Service
- 3-Years Parts

Human Touch®, LLC
3030 Walnut Ave., Long Beach, CA 90807, USA (800) 742-5493

©2016 Human Touch®, LLC.
Perfect Chair® and Human Touch® are registered trademarks of Human Touch, LLC. SofHyde is a leather-like polyurethane material that does not include any animal hide or leather. No medical claims are warranted or implied by the use of this product. Specifications are subject to change.